

POLYGLASS®



**Liquid waterproofing
products and accessories**

PRODUCTS CATALOGUE
2024



The extensive range of liquid products and accessories can be divided into

Bituminous primers	5
Liquid membranes	6
Protective paints	8
High reflectance coatings	9
Glues and self-adhesive tapes	10
Cement-based waterproofing	11
Reinforcement and separating layers	12
Protective and drainage systems	13
Vapour barrier membranes and vapour control underlays	14
Accessories for bituminous membranes	15
Insulating panels	15
Soundproofing	16
Bituminous conglomerate	17
Bituminous shingles	18
Tools	19

Liquid products and accessories

for finishing and waterproofing

An extensive range of liquid products and accessories, such as glues, mastics, primers, liquid membranes, breathable systems, and fastening systems for a more effective use of Polyglass waterproofing systems. Our Technical Department is always on hand to help you choose the best solution for the job.

	PRIMERS			LIQUID MEMBRANES										PROTECTIVE PAINTS			HIGH REFLECTANCE		GLUES, SEALANTS AND SELF-ADHESIVE TAPES									
	IDROPRIMER	POLYPRIMER	POLYPRIMER HP 45 TF PROFESSIONAL	ELASTOPAINT PLUS	ACRIPLAST	ACRIPLAST ANTIRADICE	ACRIPLAST ALU	IDROPLAST	IDROPLAST ANTIRADICE	POLYLASTIC	POLYCOAT	POLYFIBREX	POLYSINT	POLYSINT R	POLYPAIN ALU	POLYMER ALU	POLYMER ACRIL	BITUMINA	MINERAL FIX	POLYSINT SUN REFLECT	POLYMER SUPER WHITE	ADEPUR MONO	POLYGLUE PU 2K	POLYCOLL	POLYCEM	POLYDETAIL MS	POLYSEAL	BUTYLSTRIP
Priming concrete surfaces																												
Waterproofing of retaining walls																												
Waterproofing of roofs, terraces, old bitumen coverings																												
Protection for bituminous membranes																												
Gluing insulating panels																												
Gluing insulating panels and fleece-backed synthetic membranes																												
Sealing joints and/or vertical connections around skylights and vents																												
Cold gluing of polymer bitumen membranes on horizontal surfaces																												
Protection of guttering, pipes, tanks, poles, wood structures, structural metalwork and metalwork in general																												
Protective sealing paint for granules on membranes and asphalt shingles																												
Bituminous sealer for membranes and asphalt shingle components																												
White coatings with high solar reflectivity and thermal emissivity ratings for bitumen coverings																												

	CEMENT-BASED WATERPROOFING		REINFORCEMENT AND SEPARATING LAYERS			PROTECTIVE AND DRAINING MEMBRANES		VAPOUR BARRIER MEMBRANES AND VAPOUR CONTROL UNDERLAYS		INSULATING PANELS				BITUMINOUS CONGLOMERATE AND ROOFING FELT		SOUNDPROOFING							BITUMINOUS SHINGLES			
	BETONSHIELD	POLESTERE 60	POLYDREN PL	FIBREGLASS MESH	POLYFOND KIT E POLYFOND KIT DRAIN	POLYSTUOIA 20 L	SILVERTEK 15 SEAL LAP	SILVERTEK 25 SEAL LAP	ECOVAP FV 18 SEAL LAP	POLYVENT	EPS K 100-150-200-250	X-THERM	PUR V	PUR VB	PRONTO	PRONTO XP	SONIC COMFORT GLUE	SONIC COMFORT SA	SONIC ROLL PLUS	SONIC ROLL	SONIC ROLL EASY	SONIC ROLL CORNER	SONIC WALL	SONIC BAND	SONIC TAPE	POLYTEGOLA N
Tanking of reservoirs, terraces, balconies, bathrooms, swimming pools and tanks (continuously immersed in water)																										
Separating layers and reinforcing carriers			X	X	X																					
Protective and drainage systems						X	X																			
Vapour stops and barriers for ventilated roofs									X																	
Waterproof breathable synthetic tile underlay							X	X																		
Repair of potholes in road surfaces, paving repairs, filling small holes and patched-up areas															X	X										
Thermal insulation panels										X	X	X	X													
Thin acoustic underlayment for under-floor and under thin-screed application																										
Acoustic underlayment for under-floor insulation applied over existing flooring																										
Under-screed underlayment, specifically designed for isolating from footfall noise with floating screeds																										
Soundproof matting in rolls for floating screeds																										
Accessory products for acoustic insulation																										
Bituminous shingles for pitched roofs																										X
Membrane with holes for semi-adhesion									X																	

Water-based and/or solvent-free product
Solvent-based product
C Product available in a select range of colours
X Complementary products for waterproofing systems
Acoustic insulation products and accessories

Bituminous primers

Bituminous primers are used to prime surfaces and provide a key for subsequently traditional applied or self-adhesive membranes. By saturating the surfaces, they stop concrete dusting and allow a faster application of membranes, which also results in gas savings for torched-on products.

Before applying self-adhesive membranes, primers are essential to stop the self-adhesive part coming into contact with dust and/or contaminants that would otherwise interfere with its adhesive properties.

Even when tackling refurbishment work on existing smooth or mineral-surfaced membranes, the primer not only seals the granules in place, but also promotes improved adhesion of the subsequent membrane.

The range includes a water-based version (IDROPRIMER) that is essential for use in poorly ventilated areas, in urban zones and anywhere the use of solvent-based products would be an issue.

IDROPRIMER



Water-based bituminous primer made with select bitumen.

Designed for application on concrete, wood and metal surfaces.

It is odourless, non-flammable and non-toxic, meaning it can be applied without wearing a mask. Consequently, being solvent free, it is suitable for use in residential areas. It can even be applied on slightly damp surfaces (not in ponding water).

Do not apply on cold, damp days or when it is raining as this can interfere with the product's drying.



POLYPRIMER



Solvent-based bituminous primer made with blown bitumen and technical solvents.

Designed for application on concrete, wood and metal surfaces.



POLYPRIMER HP 45 TF PROFESSIONAL



Bituminous primer with pure, fast-drying solvents, toluene-free.

It has a high solids content, excellent density, is fast drying and gives good coverage.



FAST INSTALLATION AND DRYING



IMPROVED PERFORMANCE



Liquid membranes

Liquid membranes are special bitumen, acrylic or synthetic-based coatings that can be used to waterproof/protect wood and concrete surfaces, where traditional prefabricated polymer bitumen membranes cannot be applied. They are also good for restoring the waterproofing properties of old membranes, making them particularly suitable for maintenance jobs. They come in various kinds, each with its own properties to suit different possible fields of applications. Generally speaking, the bituminous variety nonetheless require protection or need to be covered when exposed outdoors and to UV rays. Furthermore, the addition of a polyester nonwoven

carrier improves its crack bridging ability.

The range also includes coloured acrylic and synthetic liquid membranes, which offer excellent weathering resistance and hence do not need to be coated over.

With any liquid membrane, it is important to comply with the minimum application thickness requirements and spread the product evenly as their thin coat (compared to prefabricated bitumen membranes) means they cannot cope with excessively irregular or uneven surfaces.

ELASTOPAINT PLUS



Water-based waterproofing thixotropic bituminous paste with polystyrene spheres and rubber granules.

This system is particularly suitable for waterproofing the outside of foundations, cellars, underground garages, load-bearing walls, and for the exterior waterproofing of tanks, containers and wells, protecting the concrete from aggressive water.

Environmentally friendly, solvent-free product resistant to most aggressive substances found in the ground; good resistance to ageing and easy application thanks to the light paste incorporating polystyrene microspheres.



ACRIPLAST



Solvent-based bitumen liquid membrane, particularly suitable for application on roofs, concrete terraces, foundations and old bitumen coverings where traditional membranes cannot be laid. Designed to be applied on existing bitumen coverings of either the unprotected variety or surfaced with chippings. In exposed systems, the products must be protected from UV rays with a protective paint such as Polyver Alu, Polyver Acril or Polysint Sun Reflect.

We recommend the use of Poliester 60 reinforcement between the first and second coat of the membrane. Acriplast's various distinguishing properties include high solids content, excellent elongation and fast drying.

The **Acriplast anti-root** (root barrier) version is used in waterproofing concrete flower boxes and retaining walls.



ACRIPLAST ALU



Solvent-based elastomeric bitumen coating with aluminium pigments.

Once dry, the Acriplast ALU product forms a flexible film that gives structures good weather resistance, creating a barrier with high UV reflectance.

The formulation, and the solvents it contains, make Acriplast ALU a ready product that can be applied wherever the situation calls for very fast material application and drying times.



IDROPLAST



Water-based bitumen liquid membrane, particularly suitable for application - even in urban areas, being solvent free and odourless - on roofs, concrete terraces, foundations and old bitumen coverings where traditional membranes cannot be applied.

Designed to be applied on existing bitumen coverings of either the unprotected variety or surfaced with chippings. In exposed systems, the products must be protected from UV rays with a protective paint such as Polyver Alu, Polyver Acril or Polysint Sun Reflect. We recommend the use of Poliester 60 reinforcement between the first and second coat of the membrane. The product's various distinguishing properties include high solid content, an excellent elongation and a quick drying.

The **Idroplast anti-root** (root barrier) version is used in waterproofing concrete flower boxes and retaining walls.



POLYLASTIC



A ready-to-use one-pack water-based elastomeric bitumen membrane made from a blend of special bitumen, specific synthetic elastomeric resins and high-dispersion fillers. The resulting compound has a high level of adhesion on many substrates, making the surfaces waterproof.

Once dried, Polylastic forms a highly elastic film that can adhere to range of different substrates, standing up to the elements, UV radiation and withstanding hairline cracking on the substrates, if any.

Polylastic's formulation means it can be left exposed, covered with cement mortar or coated.



POLYCOAT



Water-based cold asphalt paste made with synthetic resins and graded fillers, particularly suitable as a waterproofing treatment for concrete foundation structures and retaining walls.

Two coats are recommended: wait until the first coat is completely dry before applying the second one.

Non-toxic, non-flammable product with good resistance to saline solutions.



POLYFIBREX

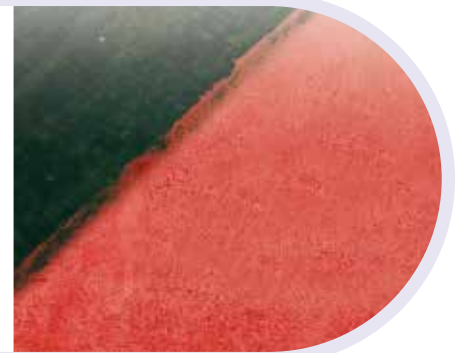


Solvent-based fibre-reinforced elastoplastic waterproofing coating, resistant to ponding water.

Suitable for waterproofing and for the UV protection of concrete surfaces and surfaces consisting of weathered polymer bitumen membranes.

It can also be applied on metal guttering.

The product comes in a choice of red or grey.



POLYSINT



Water-based acrylic elastomeric pigmented liquid membrane, particularly suitable for application on roofs, concrete terraces, fibre-cement, wood and metal surfaces.

Also suitable for protecting and repairing surfaces waterproofed with mineral-surfaced or black and old bitumen membranes.



POLYSINT R



Water-based pigmented liquid membrane made from elastomerized acrylic copolymers, with the addition of synthetic fibres that improve the product mechanical strength; once dried, it forms a strong film that adheres to the substrates it is applied to, standing up to the elements and withstanding hairline cracking that might develop on the substrates.



Protective paints

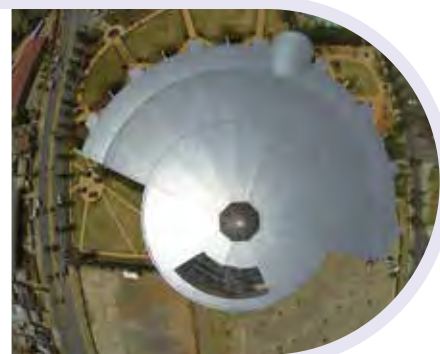
Protective paints are designed to protect structures, existing waterproofing, talc, sand and mineral-surfaced membranes from weathering, UV rays and other aggressive environmental factors. Some can be coloured or more simply pigmented with aluminium flakes, while others have a bituminous finish for ultimate protection

of structures set in the ground, such as poles, wood structures, etc. They also come in a transparent version, which is useful for sealing and “reviving” the chippings on surfaced polymer bitumen membranes. Two coats of paint are required to achieve a dense, even film with no hairline cracking.

POLYPAINT ALU



Water-based silver-coloured protective paint, particularly suitable as a topcoat and hence as a protective film, for polymer bitumen membranes, whether newly laid or undergoing maintenance. In all cases, give the surfaces to be treated time to oxidize. Its water-based formula means it is particularly suitable for application in urban areas.



POLYVER ALU



Solvent-based protective bituminous paint pigmented with aluminium pigments, particularly suitable as a topcoat for polymer bitumen membranes, whether newly laid or undergoing maintenance. In all cases, give the surfaces to be treated time to oxidize.

Once applied, it creates a protective heat-reflecting film with a solar reflectance index (SRI) rating of 61.



POLYVER ACRIL



Water-based elastomeric pigmented protective paint, particularly suitable as a topcoat for polymer bitumen membranes, whether newly laid or undergoing maintenance. In all cases, give the surfaces to be treated time to oxidize.

With its water-based formula, Polyver Acril is odourless and can be applied in urban settings.

It comes in a choice of red, grey, white or, on request, green.



BITUMINA



Fast-drying solvent-based protective varnish made with blown bitumen.

It has very good water-repellent properties and resistance to numerous harsh chemicals and environmental conditions.

It can be applied to protect guttering, pipes, tanks, poles, wood structures, structural metalwork and metalwork in general. It provides protection from damp and corrosive chemicals in underground tanks, drains, sumps and sewers.



MINERAL FIX



Water-based fixing paint, particularly suitable for protecting and fixing slate chippings on surfaced bitumen membranes and on bituminous shingles.

It is a milky white colour to start with but dries to a clear finish.



High reflectance coatings

Light-coloured and white finishing coatings with high solar reflectance and thermal emissivity ratings. These two properties result in a reduction in surface temperature even when it is exposed to strong sunlight and hence make for energy savings - and hence reduced costs - when it comes to cooling the building. Lower temperatures and less difference between day/night-time temperatures limit thermal stress on the whole structure and, more specifically, on the roof build-up, helping lengthen its service life.

These products, which come in a liquid version, can be applied on sand-, talc- or mineral-surfaced polymer bitumen membranes, or even on other traditional liquid membranes. Applied on roofs with photovoltaic systems, they limit surface overheating and allow the systems to work efficiently. The properties of these high reflectance coatings help earn LEED credits and hence promote improved environmental sustainability in the construction field.

POLYSINT SUN REFLECT



Water-based fibre-reinforced liquid membrane in white formulated with synthetic resins, with a solar reflectance index (SRI) rating of 105.

It is used in two coats for bituminous waterproofing and for concrete, for non-walkable flat roofs, refurbishment work, corrugated sheet metal roofs, sawtooth roofs, curved roofs and for areas around photovoltaic systems.

With its special pigmentation and colour, it can reduce the roof surface temperature by as much as 50%, which also has positive effects on the interior of the building: thus there is less stress on the building structure, while photovoltaic panels work more efficiently as a result.



POLYVER SUPER WHITE



Solvent-based white protective paint, with high solar reflectance and thermal emissivity ratings, marked by a solar reflectance index (SRI) of 106. It is particularly suitable as a topcoat and hence as a protective film, for polymer bitumen membranes, whether new or undergoing maintenance.

With its special pigmentation and colour, it can reduce the roof's surface temperature by as much as 50%, which also has positive effects on the interior of the building: thus there is less stress on the building structure, while photovoltaic panels work.



Glues, sealants and self-adhesive tapes

The range comprises a series of adhesives for membranes, insulating panels, a butyl tape for sealing elements on roofs and cartridge-type or bituminous paste sealants.

Adhesives of different materials and performance, ranging from simple monocomponent adhesives to fast-drying bi-component products in dual cartridges. They are used for insulating panels

as well as for polymer bitumen membranes when cold gluing is required.

Butyl tape, on the other hand, is an essential accessory for sealing connections on roofs, such as skylights, connections around windows or vertical elements.

ADEPUR MONO



Permanently elastic, easily expanding, moisture-setting 1-part polyurethane adhesive offering high adhesion. It is suitable for gluing the main kinds of insulation used in roof construction.

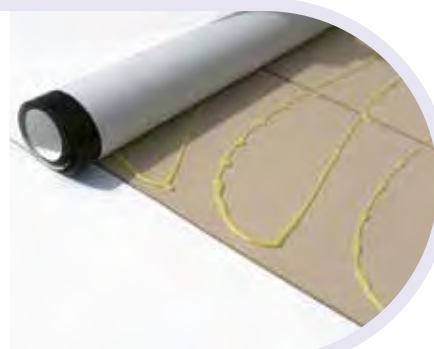
Adepur Mono is a non-flammable polyurethane adhesive.

POLYGLUE PU 2K



Solvent-free, fast-drying bi-component polyurethane adhesive for gluing insulating panels and synthetic waterproofing membrane fleeceback with geotextile, like Mapeplan® T AF. It comes in dual cartridges (twin containers with a single mixing nozzle) and is applied using a specific battery-powered gun.

Polyglue PU 2K is a ready product designed for application on concrete slabs, existing bitumen membrane coverings, steel and wood. It can also be used for gluing suitable insulating panels together. In conjunction with the Mapeplan® T AF waterproofing membrane, it is used for producing fully exposed flat roofs using the adhered system.



POLYCOLL



Solvent-based bituminous glue, particularly suitable for cold gluing of polymer distilled bitumen membranes (sand or talc finishing on underside) on flat surfaces (max. pitch 10%).

It is used on new roof build-ups, for old roof refurbishment and for gluing membranes on concrete or wood substrates, in place of traditional torched-on heat-welding.



POLYCEM



This is a solvent-based bituminous plastic cement, particularly suitable for sealing waterproof coverings where they meet vertical surfaces, outlets, skylights, vents, etc.

It is also used to seal gaps or cracks of various sizes on concrete surfaces before the next waterproofing stage.



POLYSEAL



Solvent-based adhesive sealant formulated with modified bitumen, extenders, elastomeric resins, plasticizers and various additives for gluing bituminous shingle details and for sealing technical parts when producing waterproof polymer bitumen build-up systems. It is used for quick repair jobs on the waterproofing covering, for sealing between the membranes and vertical concrete, between concrete and metal sheets, for chimney pots, skylights, gutters and ventilation ducting.



POLYDETAIL MS



One-pack MS Polymer sealant designed for sealing, repairing and installing technical features such as skylights, guttering, flues, chimneys, drains, etc; Polydetail MS is solvent and isocyanate free and features excellent elasticity and good adhesion properties. Polydetail MS polymerizes by reaction with ambient moisture.

Polydetail MS has excellent UV stability and weathering resistance and retains its elastic properties within a wide range of temperatures (from -40 °C to +100 °C).

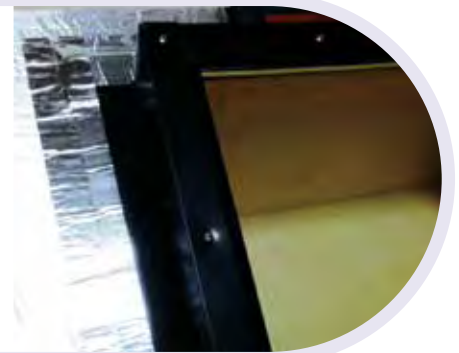


BUTYLSTRIP



High-adhesive butyl sealing tape faced with aluminium foil reinforced with a polyethylene film. The foil gives the product ageing, oxidation and weathering resistance.

Waterproof, it is cold applied, features remarkable adhesion at low temperatures, excellent heat stability and no oil migration; it is tear and ageing resistant and solvent free. An excellent complement to Silvertex 15 Seal Lap and Silvertex 25 Seal Lap breathable underlays and Ecovap FV 18 Seal Lap vapour stop underlay for airtight sealing of connections around roof windows, skylights, chimneys and gables.



Cement-based waterproofing

Cement-based products are particularly suitable for tanking balconies, terraces, bathrooms and swimming pools. When tanking terraces, they are often used in conjunction with bitumen membranes, applied before the screed, to provide waterproofing on

the upper surface before tiles are laid. In refurbishment projects, they can be applied on top of existing flooring so that it does not have to be taken up.

BETONSHIELD



Cement-based bi-component mortar, ideal for waterproofing jobs and for protecting concrete structures. Suitable for tanking concrete structures such as balconies, terraces, swimming pools and bathrooms.



Reinforcement and separating layers

Polyester nonwovens or fibreglass in various weights, used as reinforcement or as a carrier for acrylic, bitumen and cement-based liquid membranes or as separating layers. Applied between two different liquid membrane coats, they improve the membrane's

crack bridging ability or, when a heavier version is used (200 g or more), they qualify as separating layers for producing roof gardens or ballasted systems.

POLIESTERE 60



This is a white staple-fibre, needle-punched, calendered nonwoven polyester fabric with a mass of 60 g/m used as a carrier for liquid membrane waterproofing coatings like Acriplast and Idroplast, their root barrier versions, for Polysint acrylic membrane and for Polyfibrex fibre-reinforced coating.

With the aid of a roller, soak Polyestere 60 in the first liquid membrane coat as soon as it goes on. Allow the first coat to dry before applying the second.



POLYDREN PL



Nonwoven polyester felt useful for creating drainage systems, for producing roof gardens and separating layers in ballasted systems.

FIBREGLASS MESH



Treated fibreglass mesh. Applied as reinforcement in the Betonshield waterproofing system, allowing the system to suitably withstand the movement of the various layers as a result of exposure to a wide range of temperatures and the problem of shrinkage, helping to stop the formation of unsightly cracks.

Lay the fibreglass mesh on the render while it is still wet, applying it from top to bottom and embedding it in the render with the aid of a trowel or knife.



Protective and drainage systems

Polyglass has a range of protective and drainage membranes used in protecting the waterproofing on underground structures or retaining walls in general. Excellent water drainage capacity is delivered by the Polyfond Kit Drain stud membrane coupled with a

polypropylene geotextile and by the Polystuoia 20 or Polystuoia 20 L drainage geocomposite for foundations, roof gardens, man-made reservoirs and for the protection of waterproofing.

POLYFOND KIT - POLYFOND KIT DRAIN



Polyfond KIT is a protective system made from high-density extruded polyethylene (HDPE). It is particularly effective in protecting the waterproofing on underground structures or earth retaining structures in general.

In the Polyfond KIT Drain version, the white polypropylene needle-punched nonwoven provides excellent excess water drainage capacity in lightweight roof gardens.



POLYSTUOIA 20 L



Geocomposites comprising two UV-stabilized, needle-punched polypropylene staple-fibre filter geotextiles with a 3-dimensional drainage structure sandwiched between them made up of polypropylene monofilaments. The two geotextiles are heat bonded to the drainage core using a continuous process.

Meeting the requirements of drainage system standard EN 13252, they are effective in draining away water, while the properties of the polypropylene textiles successfully separate the soil from the drainage structure and filter the water inside. They are used as drainage layers, laid either vertically or horizontally, in the construction of foundations, roof gardens, tunnels and man-made reservoirs. They also act as a protective layer when laid over synthetic waterproofing membranes and polymer bitumen membranes.



Vapour barrier membranes and vapour control underlays

These are synthetic and/or bitumen membranes that help control the flow of vapour through the roof build-up.

They come with various Sd (equivalent air layer thickness) values and hence designers can choose whichever best suits the specific requirements of the roof system used. Nonetheless, their main function is to protect roof insulation from damage resulting from water getting into the roof, which could compromise its performance in the long run.

Generally, with an Sd value <0.1 m, membranes rate as highly breathable and are applied on top of the insulation, which in many cases may also serve as a covering under tiles, while an Sd value >2 m means they belong to the vapour stop underlay category and are placed on the underside of the insulation system, or as a secondary waterproofing underlay in uninsulated roofs or in roofs with a double ventilation cavity.

SILVERTEK 15 SEAL LAP



Sd=0,02

UV-stabilized highly breathable waterproof 150 g/m² synthetic membrane incorporating a double adhesive band, offering excellent performance when used as a waterproof layer under tiles, as a temperature and moisture control and airtight/windproof layer for pitched ventilated roof systems. It is applied on roofs with a pitch >30% on top of the insulation, protecting it from water getting inside and, at the same time, allowing water vapour to escape outside.

Silvertek 15 Seal Lap's built-in double adhesive band means overlaps are sealed effectively, making them windproof, airtight and watertight. Butylstrip self-adhesive butyl tape - in the most appropriate size - can be used for sealing end laps as well as for connecting details.



SILVERTEK 25 SEAL LAP



Sd=0,03

UV-stabilized highly breathable waterproof 225 g/m² synthetic membrane incorporating a double adhesive band, offering excellent performance when used as a waterproof layer under tiles, as a temperature and moisture control and airtight/windproof layer for pitched ventilated roof systems. It is applied on roofs with a pitch <30% on top of the insulation, protecting it from water getting inside and, at the same time, allowing water vapour to escape outside.

Silvertek 25 Seal Lap's built-in double adhesive band means overlaps are sealed effectively, making them windproof, airtight and watertight. Butylstrip self-adhesive butyl tape - in the most appropriate size - can be used for sealing end laps as well as for connecting details.



ECOVAP FV 18 SEAL LAP



Sd=5,5

Synthetic vapour stop underlay, incorporating a double adhesive band, offering excellent performance, especially on ventilated timber roofs. The product comprises two layers of UV-stabilized spunbond polypropylene nonwoven fabric with a polypropylene film sandwiched between them. For even easier application, Ecovap FV 18 Seal Lap's overlaps incorporate an adhesive system that provides them with a watertight seal against water vapour.

Butylstrip self-adhesive butyl tape - in the most appropriate size - can be used for sealing end laps as well as for connecting details. The underlay is designed to be laid on the roof deck under the insulation (on the warm side of the roof) to protect it, helping water vapour to escape and assisting in the expulsion of any moist air generated in the dwelling that manages to get inside the roof.



POLYVENT



Sd=100

This membrane is made from a Polypropylene-modified distilled bitumen compound and a perforated reinforced fibre glass mat carrier. The holes measure 40 mm in diameter and are distributed over the surface.

It is used as a dividing layer or vapour barrier for the partially adhered application of waterproofing membranes on roofs over interiors producing a lot of vapour and subject to considerable dimensional changes. It ensures that the bonding areas of the membrane torched on with a propane gas torch are evenly distributed.



Accessories for bituminous membranes

Line of finishing accessories for bituminous membranes.

OUTLETS

Standard outlets in plastic material, with spigot, height 250 mm.

Super outlets in IGOM.CE, with shank, height 250 mm.

Angle union in plastic material.

Diameters from 50 mm to 160 mm available on request.



POLYETHYLENE ROOF VENTS

Polyethylene Roof Vents with a diameter of 7,5 cm and a height of 27 cm, or the double wall type.



LEAF GUARDS

Universal adaptable model in polyethylene for outlets.

They are adaptable for diameters from 7,5 cm to 12,5 cm.



Insulating panels

Comprehensive range of thermal insulation panels of different materials and properties for application on flat and pitched roofs.

EPS K 100-150-200-250

These are thermal insulation panels made from sintered expanded polystyrene, in rigid sheets, produced with non-regenerated virgin raw materials, in conformity with standard EN 13163.



X-THERM

Single-ply thermal insulation panel made from rigid extruded expanded polystyrene foam.

The product meets the requirements of standard EN 13164.



PUR V

Thermal insulation panel made from expanded polyurethane laminated with a saturated polyethylene-coated fibre glass mat.

The product meets the requirements of standard EN 13165.



PUR VB

Thermal insulation panel made from expanded polyurethane sandwiched between a bituminized fibre glass mat on the top and a saturated fibre glass mat on the bottom.

The product meets the requirements of standard EN 13165.



Soundproofing

Polyglass has developed a modular system of sound insulation products to address the problem of footfall noise - the SONIC line - designed for the simple and reliable installation of floating screeds and flooring so that they are perfectly isolated from the substrate. The new SONIC COMFORT and SONIC ROLL floor system are designed to isolate footfall noise both under flooring and under screed, even thin screeds, with a relatively non-invasive procedure.

SONIC COMFORT GLUE

Anti-fracture acoustic underlayment for thin floor applications designed for use under flooring (tile, stone, engineered wooden flooring) or under "thin" screeds, including applications with radiant systems that have low inertia. The material is sandwiched between a fabric designed to ensure flooring adhesives bond securely. It should be applied with the screen-printed side exposed (facing up).

The kit includes a tape strip for sealing the various membranes and a perimeter edging strip for decoupling vertical elements in under-floor applications. Thickness of 2 mm.



SONIC COMFORT SA

Layer of under-floor anti-fracture acoustic underlayment designed to be applied over existing flooring only, in conjunction with thin screeds. It has been designed for under-floor applications (under tile, stone, engineered wooded flooring). The material is faced with a fabric designed to ensure flooring adhesives bond well to it, while it has a self-adhesive underside protected by a removable backing. It should be applied with the screen-printed side exposed (facing up). The kit includes a tape strip for sealing the various membranes and a perimeter edging strip for decoupling vertical elements in under-floor applications. Thickness of 2 mm.



SONIC ROLL PLUS

Impact noise reducing acoustic matting product made up of cross-linked expanded polyethylene sandwiched between polyester fibre on the underside and an aluminium foil facing designed to act as a vapour barrier and provide mechanical protection.

The specific adhesive rebated edge means there is no need to apply sealing tape along the membrane joins. Nominal thickness of 7 mm.



SONIC ROLL

Impact noise reducing acoustic matting product made from resilient material sandwiched between polyester fibre on the underside and a geotextile facing designed to provide tear-resistant mechanical protection.

The specific rebated edge makes it easy to overlap the various membranes correctly and then seal them with relevant tape.

Nominal thickness of 8 mm.



SONIC ROLL EASY

Designed as a simple and cost-effective solution for under-screed soundproofing.

The product is made up of a single-ply cross-linked expanded polyethylene mat with a density of 30 kg/m³ that, with its light weight, is easy to handle on site so you can make light work of installation.

You are advised to refer to the product's technical characteristics to determine whether you will meet the acoustic requirements set out by law (in Italy, this is DPCM 5.12.97).



SONIC ROLL CORNER

Specific accessory for use in producing "floating screeds" (according to Italian standard UNI 11516:2013) when dealing with floor slabs and subfloors of any kind.

This is a highly practical and entirely straightforward system for ensuring there is no break in the continuity of the Sonic Band Perimeter Edging Strip around the inside and outside corners of walls inside a building.

Thickness of 2 mm.



SONIC WALL

Acoustic break strip made from high-density polyethylene designed to act as a decoupling device between all partition walls and external stud walls in order to limit the transmission of impact noise from walls to the load-bearing floor.

It provides excellent permanent elasticity with the power to deaden vibrations while still retaining good resistance to deformation, preventing the formation of cracks between the wall and ceiling.



SONIC BAND

Closed-cell expanded polyethylene adhesive perimeter edging strip to be applied to perimeter walls and all elements that penetrate the screed in order to avoid acoustic bridging, ready moulded into an L shape for easy installation. The removable adhesive is pre-cut so that the backing can be peeled off in two stages, thus making it easier to install the detail. Sonic Band is ideal for use in conjunction with all products from the Sonic range. It comes in two different heights, H 150 mm and H 210 mm: choose the best option depending on the total thickness of the floating screed.



SONIC TAPE

Closed-cell expanded polyethylene adhesive tape used to seal all overlaps between different elements in the SONIC soundproofing system.



Bituminous conglomerate

This family comprises two traditional products used for waterproofing, hot bonding polyurethane insulating panels, rock wool, fibreglass, and a bituminous conglomerate that is great for repairing small potholes in roads and for maintenance work.

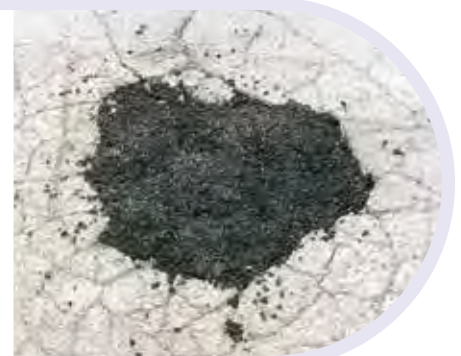
PRONTO



Bituminous conglomerate made up of calcareous aggregate, sand and fillers, mixed hot with a bituminous binder and plant-derived additives.

Ideal for road paving maintenance, filling potholes, repairing small areas, small patch jobs and for sealing cracks in the road surface, even with traffic still running. Vehicle traffic over the repaired area ensures the product is perfectly hardened.

For best application results, we recommend dusting the finished surfaces with cement during the summer months and with fine sand during the winter.



PRONTO XP



High-performance asphalt mix that is workable at ambient temperature and made up of graded aggregate and fluxed bitumen binders enhanced with additives.

Pronto XP differs from both cold mix and hot mix asphalt as its ability to harden is not seasonally dependent, making it suitable for year-round application.

Pronto XP is suitable for repairing medium-sized potholes or cracks in road pavements.

Bituminous shingles

Bituminous shingles, suitable for covering roofs as an alternative to classic terracotta or concrete roof tiles. They are light, easy to install and have attractive colouring, making them a popular choice for covering residential buildings and houses as well as gazebos,

lean-tos, sheds and small wooden buildings in general. The range includes a full complement of accessories, such as broad-headed nails and a ridge vent for best results and lengthy service life.

POLYTEGOLA N



This is an bituminous shingle that meets European standards, comprising a fibreglass reinforcement soaked in oxidated bitumen and faced with coloured ceramic-coated basalt granules. It comes in rectangular 3-tab strips and in 6-tab beaver tail strips.

The production and the manufacturing control process are certified to standard UNI EN ISO 9001:2008.



NAILS FOR POLYTEGOLA N SHINGLES



Roofing large head nails, made of 20 and 35 mm galvanized steel, and are required for the mechanical fastening of Polytegola N bituminous shingle.



RIDGE VENT FOR POLYTEGOLA N SHINGLES



The Ridge vent is a thermoplastic moulding designed for the ventilation of cavities in roofs produced using Polytegola N shingles and/or fibre-cement sheeting in general, with any roof pitch.

It features a series of labyrinths to stop water being driven in by the wind, special hooks for alignment, insect screening, a series of holes for nailing and ends for sealing start and finish points.



PITCHED ROOF VENTS FOR POLYTEGOLA N SHINGLES

These vents are thermoplastic mouldings for roofs with a pitch in the 15° to 85° range and are used for the ventilation of ventilation cavities.

They also have an 18 mm front trim to act as a drip edge. Vents come in 2 versions: with and without flanges.



Vent without flange



Vent with flange

Tools

Polyglass has an extensive range of complements required to apply polymer bitumen membranes, such as torches, welding tools, nozzles and pressure rollers.

PROPANE TORCH

This is a blowtorch designed for applying bitumen membranes.

It guarantees excellent performance and high efficiency due to the considerable flame power produced.



PROPANE TORCH (HOT AIR)

Blowtorch producing a stream of hot air, running off propane gas, specifically designed for use where there are restrictions on the use of open flames.



LEISTER WELDING TOOL

Hot air tool of proven efficiency, with its light weight and slim grip, it allows for effortless welding.



PRESSURE ROLLER

Push-on nozzle with wide flat opening (comes in 40 and 60 mm diameter).



SILICONE ROLLER

40 mm silicone single-arm pressure roller with bearings for detail work with self-adhesive membranes.



PRESSURE ROLLER

Comes in large and small size, essential for applying self-adhesive membranes.



POLYGLASS®



Polyglass SpA

Registered Office: V.le Edoardo Jenner, 4 - 20159 Milan - Italy

Administrative Headquarters and Production Facility: Via Giorgio Squinzi, 2 - 31047 Ponte di Piave (TV) - Italy

Phone +39 04227547 - Fax +39 0422854118 - Email: info@polyglass.it - www.polyglass.com