

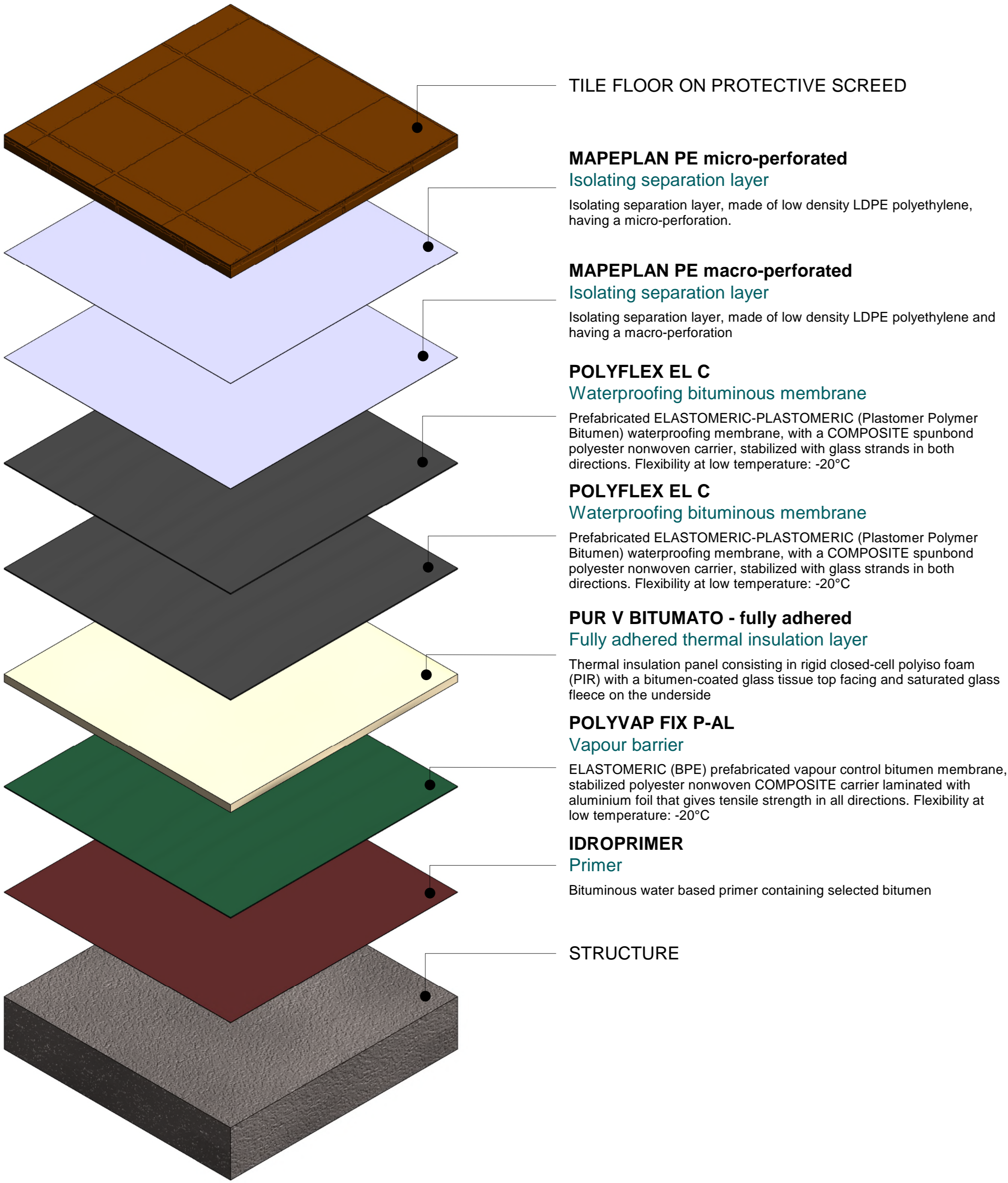
Contents of the Revit package

NOTE:
In order to facilitate the designer, the system was placed in the "Roof" family and also in the "Floor" family.

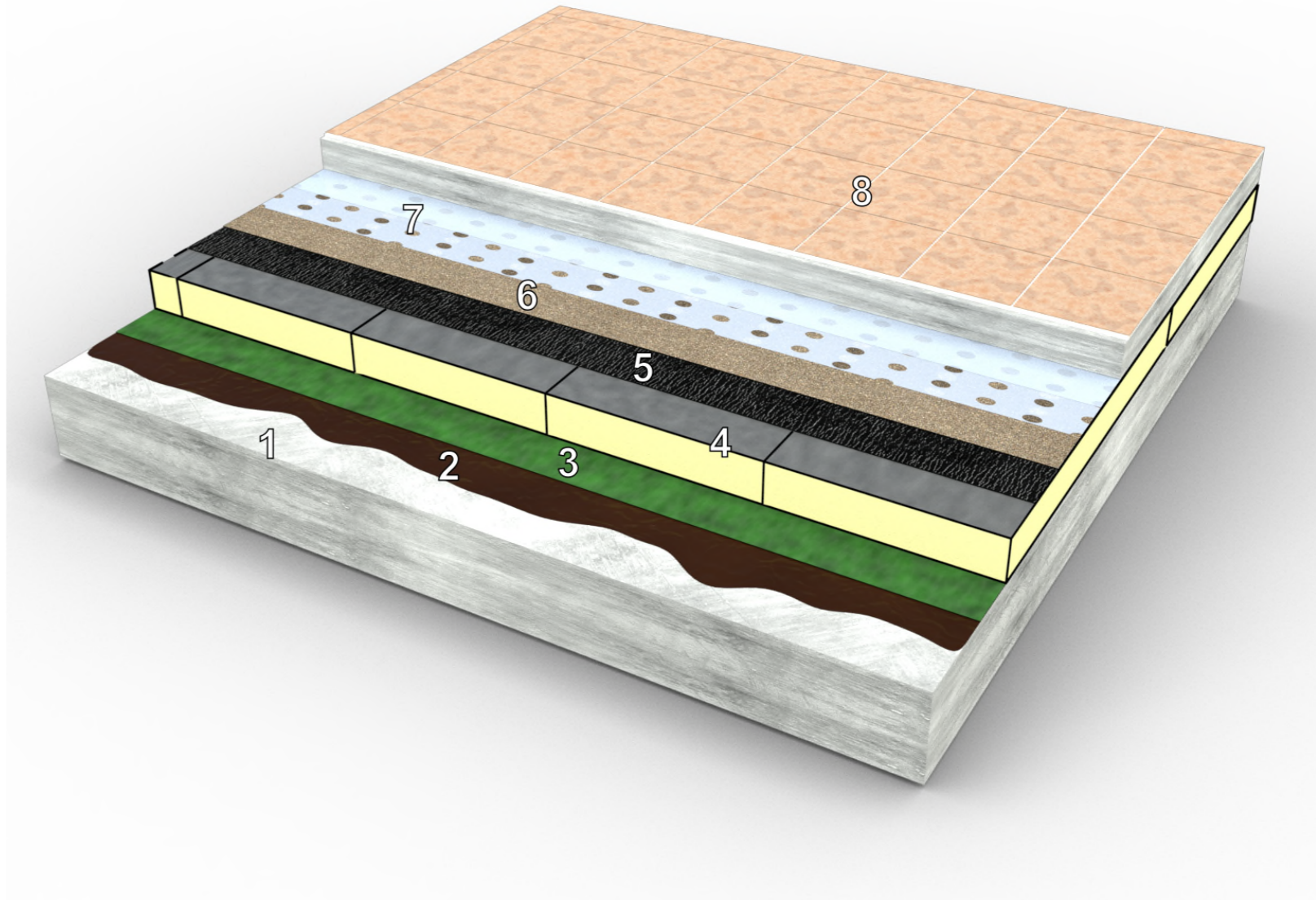
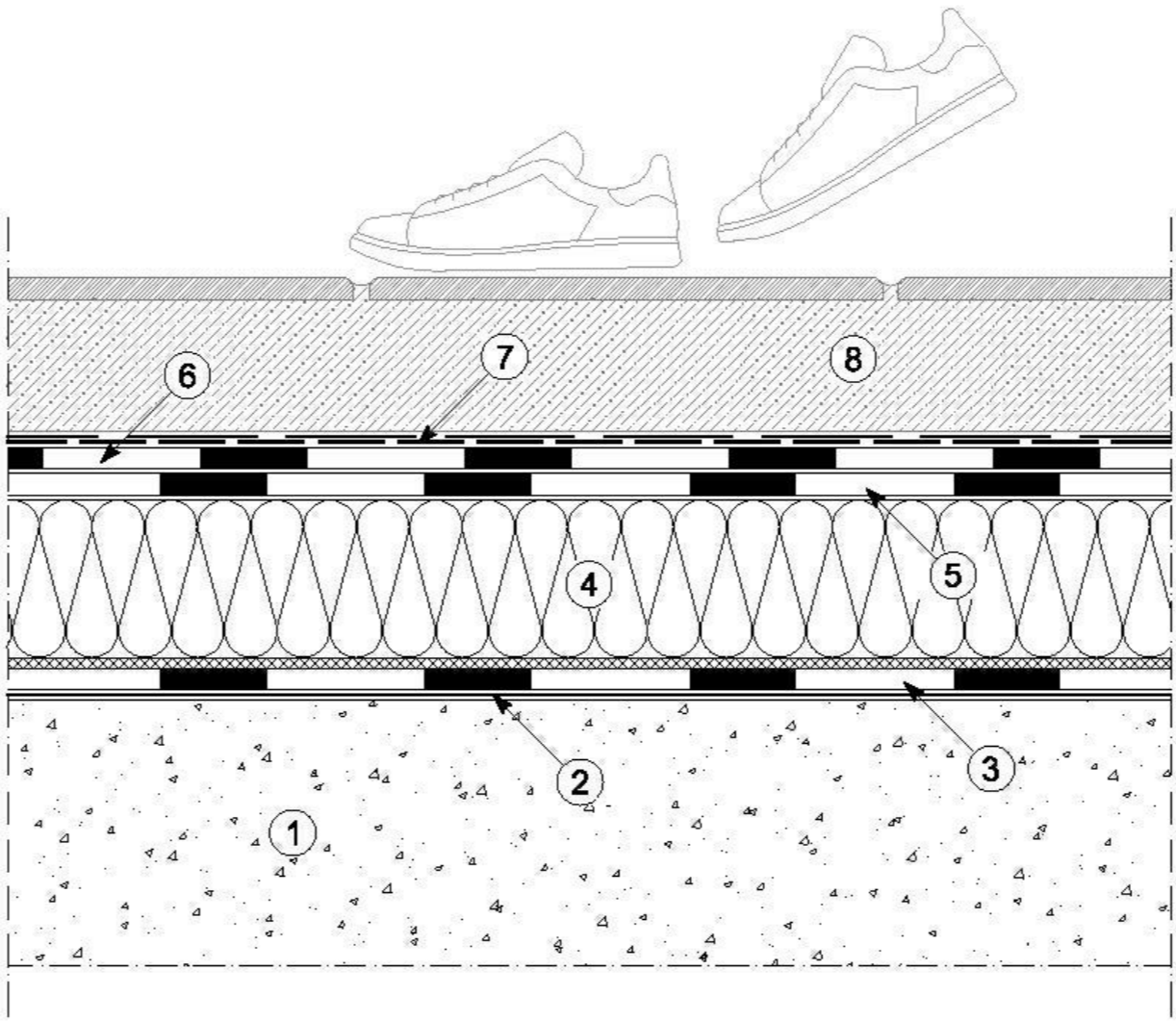
In order to design correctly the systems, it is necessary to respect the intended uses and the indications given in the Polyglass technical documentation.

If you have any question, please contact Polyglass Technical Support

Exploded Axonometric



System description



| BIM System B06 04 Roof with tile paving and torched thermal insulation layer | | | | | |
|---|--|-------------------------------|----------------|---|--|
| n. | LAYER | MATERIAL | THICKNESS (mm) | POSSIBLE ALTERNATIVE * | NOTE |
| 1 | Structure | Reinforced concrete slab | - | Concrete and masonry slab, precast concrete elements, corrugated metal sheet with concrete slab | The supports must be made on a slope or with an overlying slope screed in non-lightweight concrete |
| 2 | Primer ** | IDROPRIMER | 0,1 | | |
| 3 | Vapor barrier | POLYVAP FIX P-AL | 3,5 | | |
| 4 | Fully adhered thermal insulation layer | PUR V BITUMATO | - | | Fully adhered |
| 5 | Waterproofing membrane first layer | POLYFLEX EL C | 4 | | |
| 6 | Waterproofing membrane second layer | POLYFLEX EL C | 4 | | |
| 7 | Double separation layer ** | MAPEPLAN PE macro-perforater | 0,15 | | |
| | | MAPEPLAN PE micro-perforated | 0,1 | | |
| 8 | Paving | Tile floor on concrete screed | - | | |

*NOTE:
The alternative products are inserted in the library file "MaterialsPolyglass_ENG.adsklib"

**NOTE:
In the build-up made with Autodesk Revit software, the minimum thickness that can be depicted is 0.8 mm, so all products with a lower thickness will be represented with this value.

For the characteristics and methods of use of all products, always refer to the latest updated version of the technical data sheets available on the website www.polyglass.com

BIM System B06|04
Roof with tile paving and torched thermal insulation layer

NOTE: it is under user's responsibility to verify the correctness of the final values provided by Revit for the compound package and that, in any case, Polyglass can guarantee the correspondence of the information provided, only in relation to the products of its own manufacture.