

Contents of the Revit package

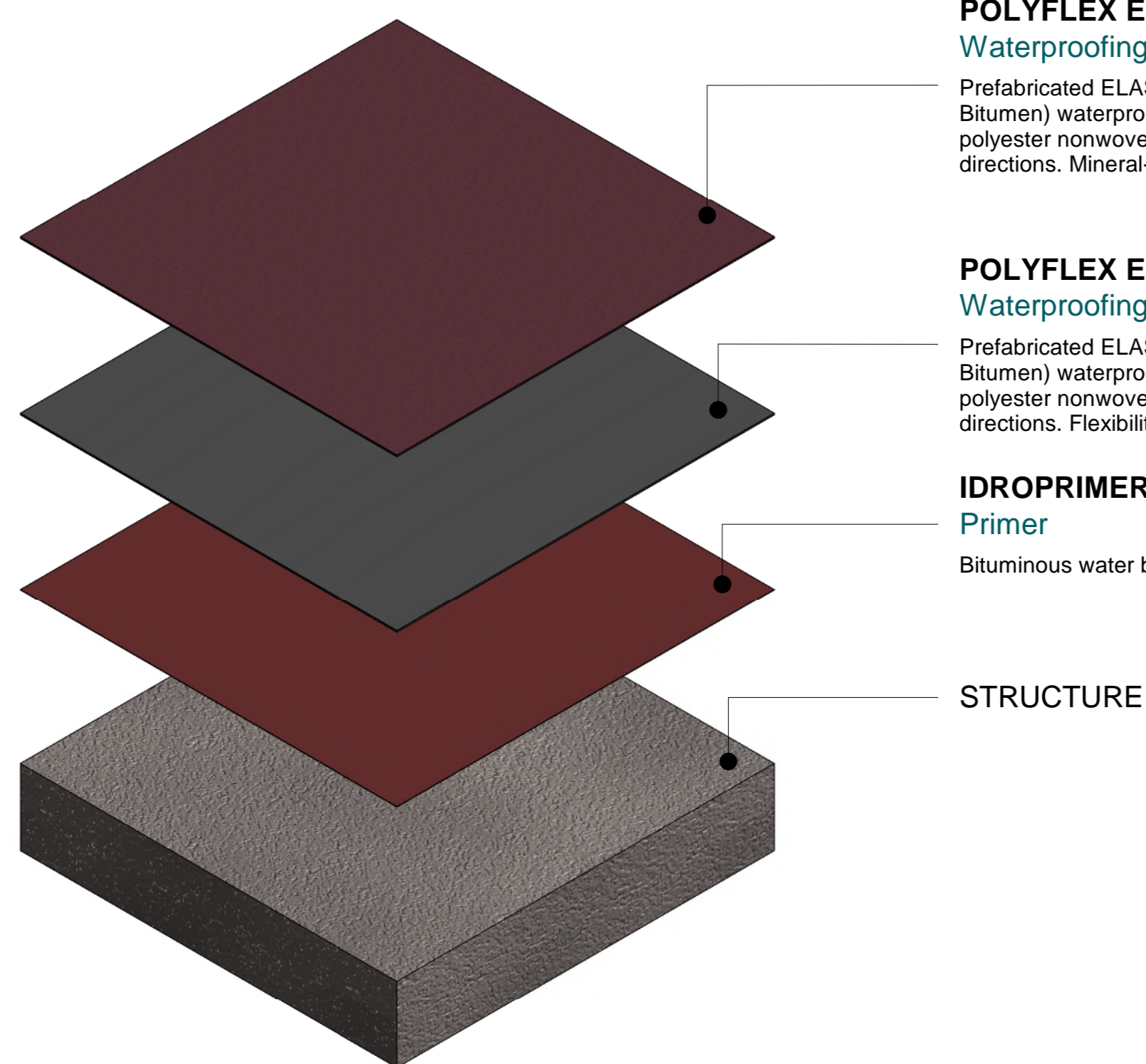
NOTE:

In order to facilitate the designer, the system was placed in the "Roof" family and also in the "Floor" family.

In order to design correctly the systems, it is necessary to respect the intended uses and the indications given in the Polyglass technical documentation.

If you have any question, please contact Polyglass Technical Support

Exploded Axonometric



POLYFLEX EL C G

Waterproofing bituminous membrane

Prefabricated ELASTOMERIC-PLASTOMERIC (Plastomer Polymer Bitumen) waterproofing membrane, with a COMPOSITE spunbond polyester nonwoven carrier, stabilized with glass strands in both directions. Mineral-surfaced. Flexibility at low temperature: -20°C

POLYFLEX EL C

Waterproofing bituminous membrane

Prefabricated ELASTOMERIC-PLASTOMERIC (Plastomer Polymer Bitumen) waterproofing membrane, with a COMPOSITE spunbond polyester nonwoven carrier, stabilized with glass strands in both directions. Flexibility at low temperature: -20°C

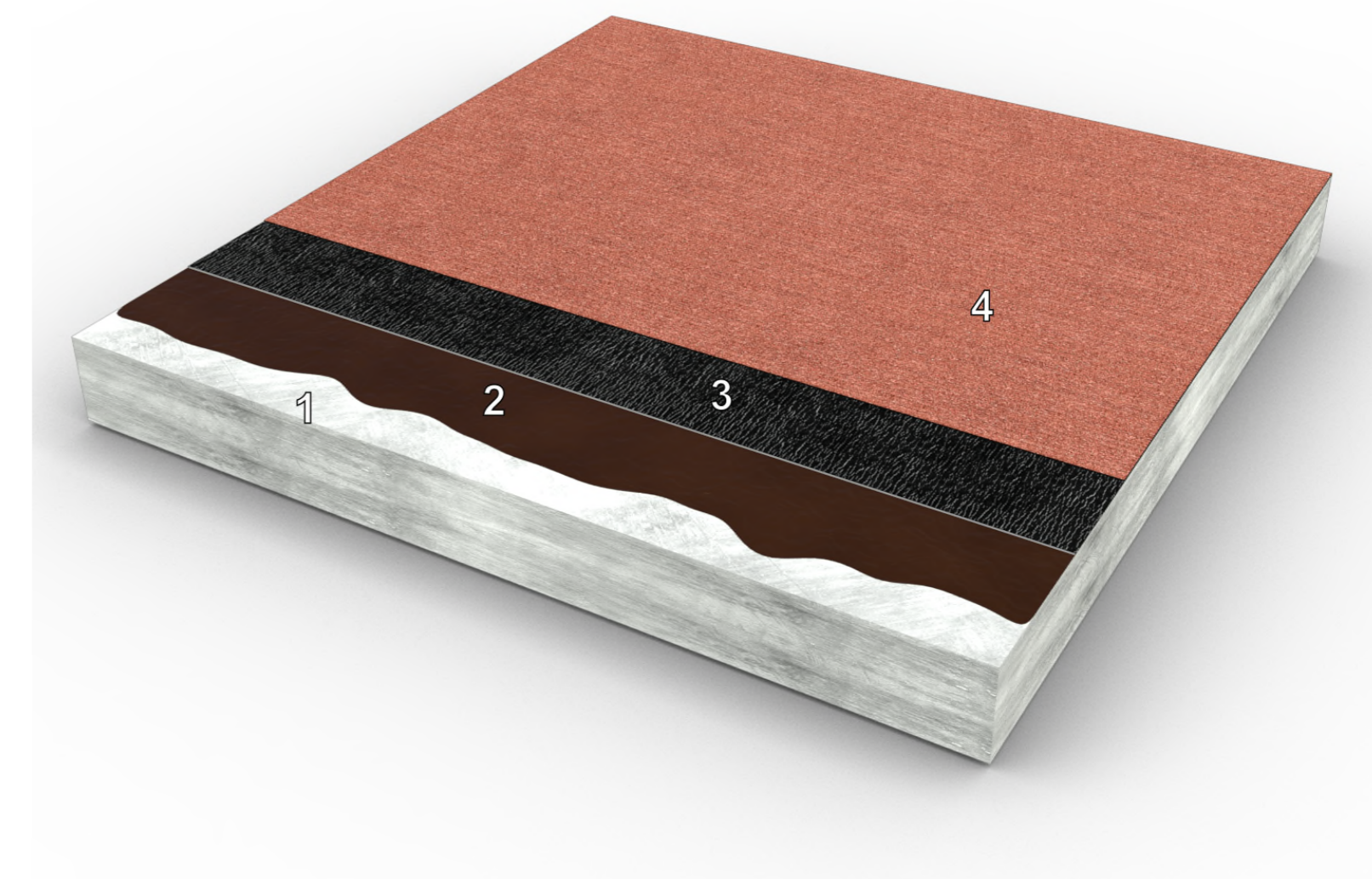
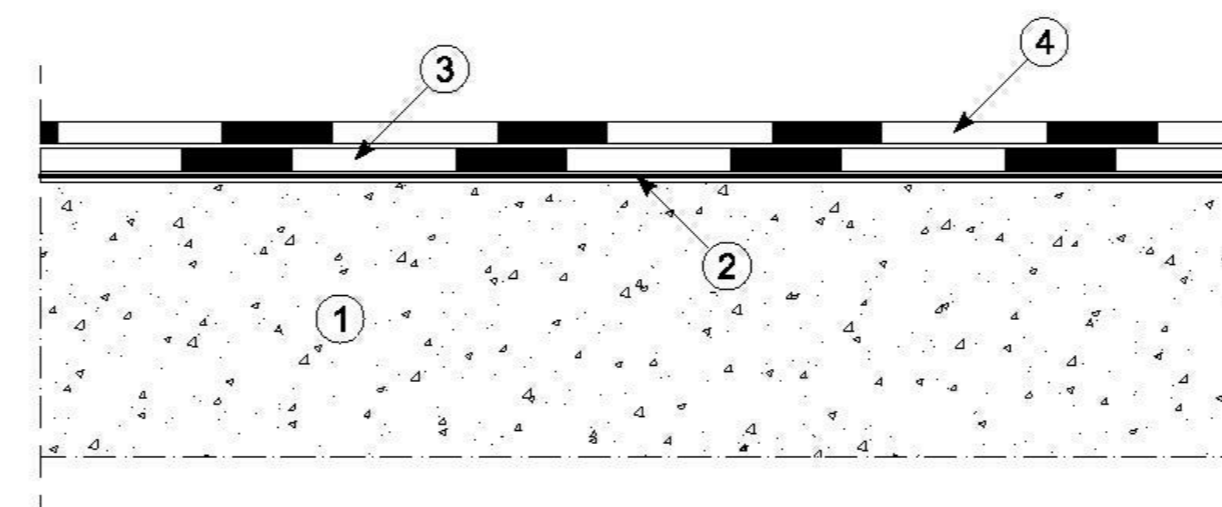
IDROPRIMER

Primer

Bituminous water based primer containing selected bitumen

STRUCTURE

System description



BIM System B01 01					
Exposed roof with bituminous waterproofing membrane, non-insulated (mineral surface)					
n.	LAYER	MATERIAL	THICKNESS (mm)	POSSIBLE ALTERNATIVE *	NOTE
1	Structure	Reinforced concrete slab	-	Concrete and masonry slab, precast concrete elements, corrugated metal sheet with concrete slab	The supports must be made on a slope or with an overlying slope screed in non-lightweight concrete
2	Primer **	IDROPRIMER	0,1		
3	Waterproofing membrane first layer	POLYFLEX EL C	4		
4	Waterproofing membrane second layer	POLYFLEX EL C G	4		

*NOTE:

The alternative products are inserted in the library file "MaterialsPolyglass_ENG.adsklib"

**NOTE:

In the build-up made with Autodesk Revit software, the minimum thickness that can be depicted is 0.8 mm, so all products with a lower thickness will be represented with this value.

For the characteristics and methods of use of all products, always refer to the latest updated version of the technical data sheets available on the website www.polyglass.com

BIM System B01|01

Exposed roof with bituminous waterproofing membrane, non-insulated (mineral surface)

NOTE: it is under user's responsibility to verify the correctness of the final values provided by Revit for the compound package and that, in any case, Polyglass can guarantee the correspondence of the information provided, only in relation to the products of its own manufacture.



Registered office: Viale E. Jenner, 4 20159 Milano
Head Office: Via Giorgio Squinzi, 2 31047 Ponte di Piave (TV)
tel. +39 04227547 - fax +39 0422854118
www.polyglass.com e-mail: info@polyglass.it